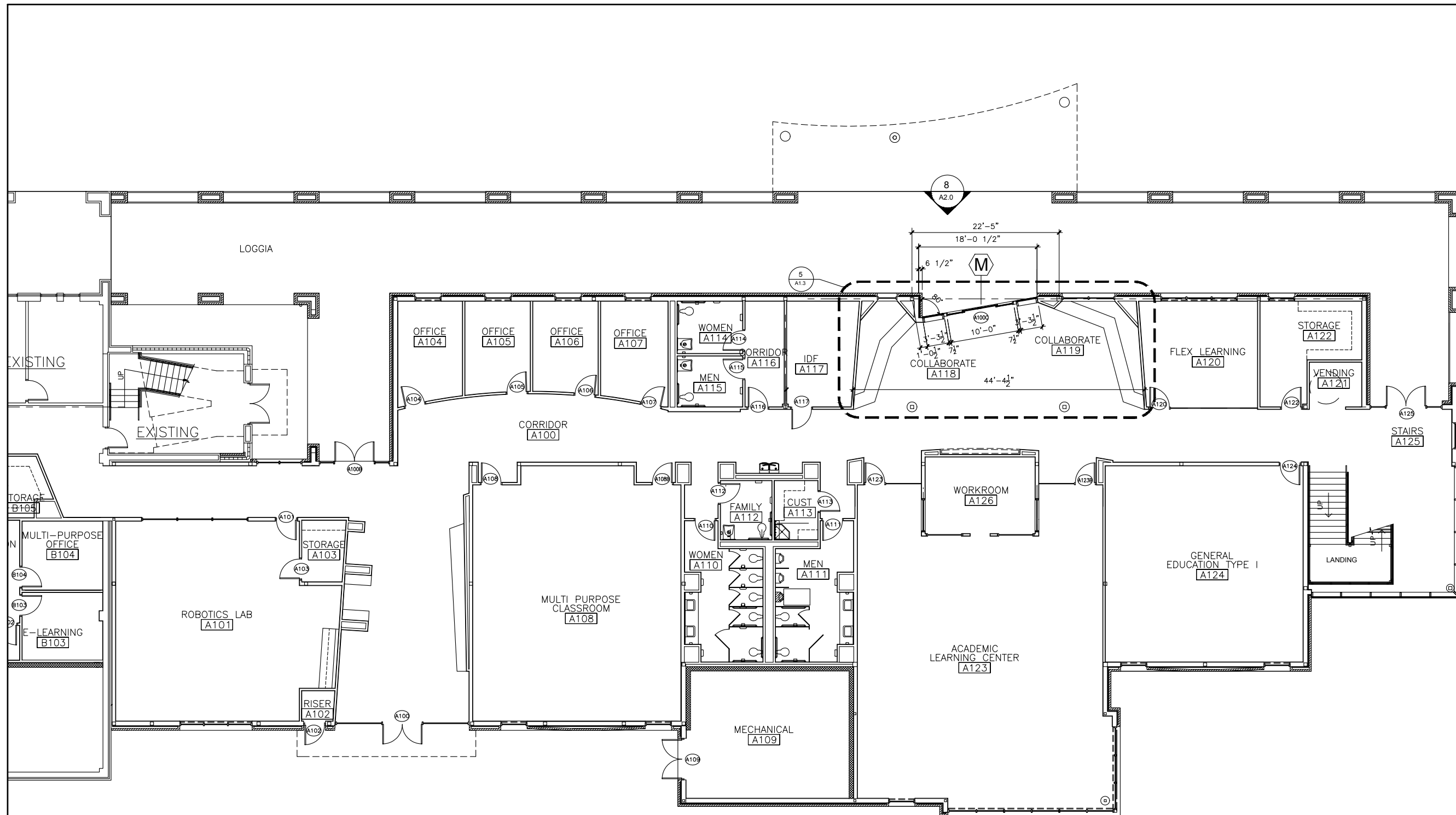
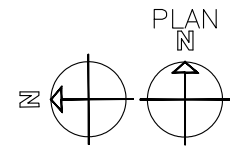


NO.	DATE	DESCRIPTION
1	04/29/18	First Submittal
2	05/01/18	CHANGES TO COMPLY WITH LARGE MISSILE REQUIREMENTS



**FLOOR PLAN**  
SCALE: 1/16" = 1'-0"  
ARCH. REF.: A1.1  
5/A1.3  
3/A1.11

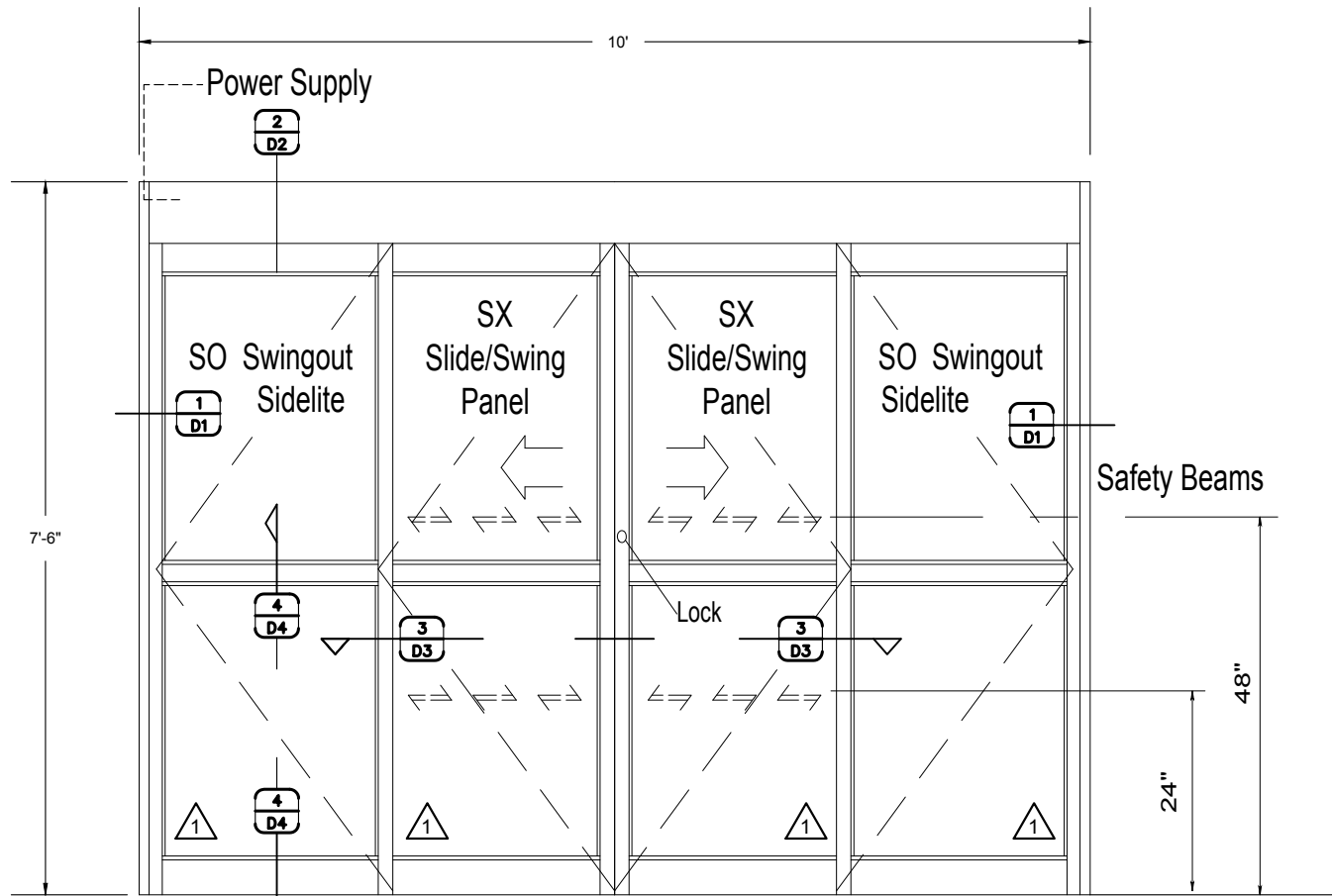
**1ST COLLABORATE ENTRANCE**  
HORTON AUTOMATICS, HD-SLIDE SERIES 2001 BELT DRIVE



**TEXAS GLASS & TINTING**  
103 E. Mockingbird Ln., #B Victoria, TX 77901  
(361) 572-0026 (800) 242-3007

PROJECT: Del Mar College Emerging Technologies  
**HORTON AUTOMATICS SLIDER**  
ARCHITECT: GIGNAC ARCHITECTS  
(361) 884-2861  
GENERAL CONTRACTOR: WEAVER & JACOBS CONSTRUCTORS  
(361) 277-9500

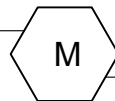
PROJECT NO.	TG-1804-02
DRAWN BY	fp
DATE	05/01/18
SCALE	1/16" = 1'-0"
DRAWING	1ST FLOOR PLAN
SHEET	P1



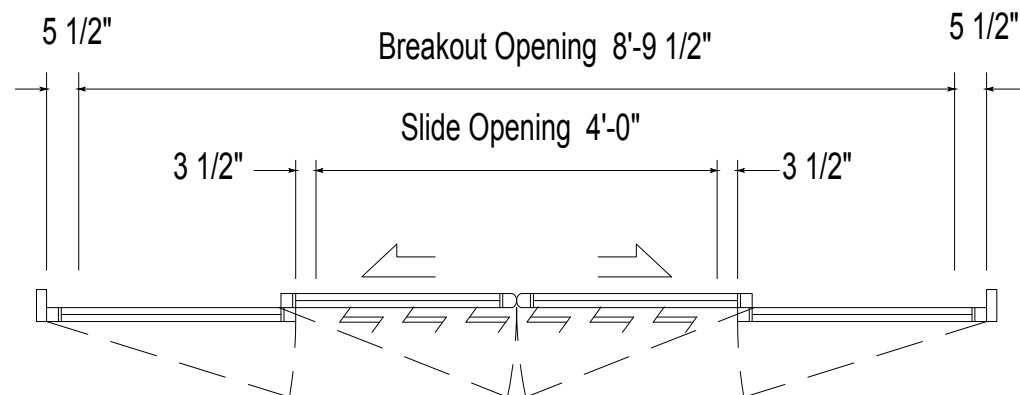
SX panels can breakout 90° from any position of slide movement with max. 50 lbf. of force at lock stile

**ELEVATION**

SCALE: 1/2" = 1'-0"  
 ARCH. REF.: A1.1  
 A1.11  
 A1.12



SYSTEM (s): HORTON AUTOMATICS  
 SERIES 2001 BELT DRIVE  
 #310 BI-PARTING SLIDER  
 DOOR #(s): A100C

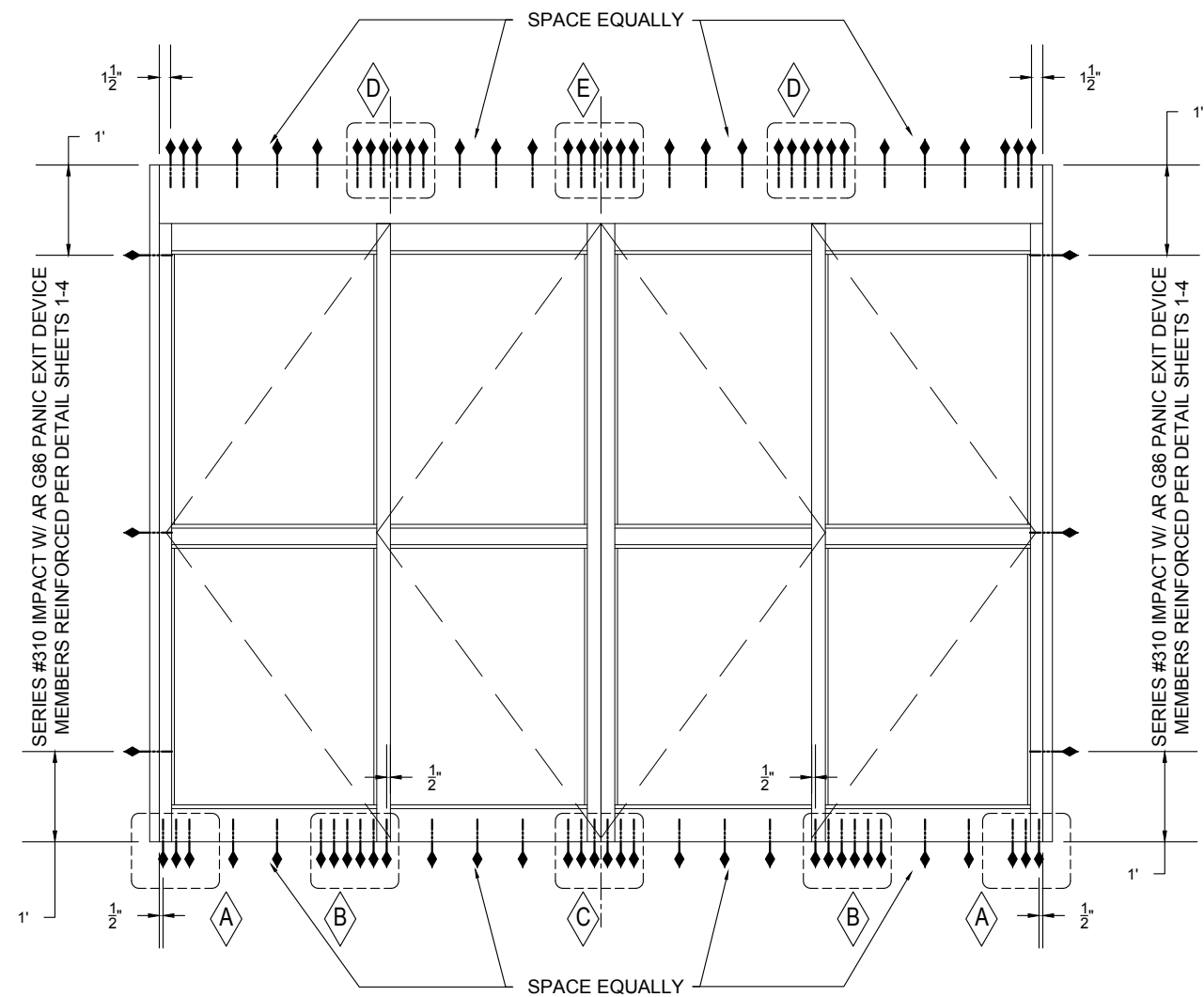


**PLAN VIEW**

SCALE: 1/2" = 1'-0"  
 ARCH. REF.: 7/A1.12  
 3/A1.11  
 A1.1



SYSTEM (s): HORTON AUTOMATICS  
 SERIES 2001 BELT DRIVE  
 #310 BI-PARTING SLIDER  
 DOOR #(s): A100C



**FASTENER GROUP SPACING**

- ⬠ SEE DETAIL A, ON SHEET R1 (NOA #17-0828.05, PAGE 3 OF 7)
- ⬠ SEE DETAIL B, ON SHEET R1 (NOA #17-0828.05, PAGE 3 OF 7)
- ⬠ SEE DETAIL C, ON SHEET R1 (NOA #17-0828.05, PAGE 3 OF 7)
- ⬠ SEE DETAIL D, ON SHEET R1 (NOA #17-0828.05, PAGE 3 OF 7)
- ⬠ SEE DETAIL E, ON SHEET R1 (NOA #17-0828.05, PAGE 3 OF 7)

**FASTENER TYPE**

**HEADER - STEEL (0.125 THICK, Fy=36 KSI):** INTERCORP#14 STEEL HWH SELF DRILLING SCREW (Grade 5), 0.625" MIN. EDGE DISTANCE (FULL-THREAD ENGAGEMENT)

**JAMB - WOOD (#2 SYP):** 1/4" X 4" LONG LAG BOLT (Grade 5), 2 3/4" MIN. PENETRATION, 1" MIN. EDGE DISTANCE, MINIMUM BUCK (2) 2X8 W/MIN. G=0.55.

**THRESHOLD - CONCRETE (3350 PSI):** CRETE-FLEX SS4 FH 1/4" CONCRETE SCREW, 1.75" EMBEDMENT, 2.5" MIN. EDGE DISTANCE FROM SUBSTRATE

SUBSTRATE CONSTRUCTION MUST CONFORM WITH THE MINIMUM REQUIRED SUBSTRATE MATERIAL SPECIFIED ON THE MIAMI DADE COUNTY APPROVED REPORT NOA #17-0828.05

**FASTENERS**

SCALE: 1/2" = 1'-0"  
 ARCH. REF.: A1.1  
 3/A1.11  
 7/A5.6



SYSTEM (s): HORTON AUTOMATICS  
 SERIES 2001 BELT DRIVE  
 #310 BI-PARTING SLIDER  
 DOOR #(s): A100C

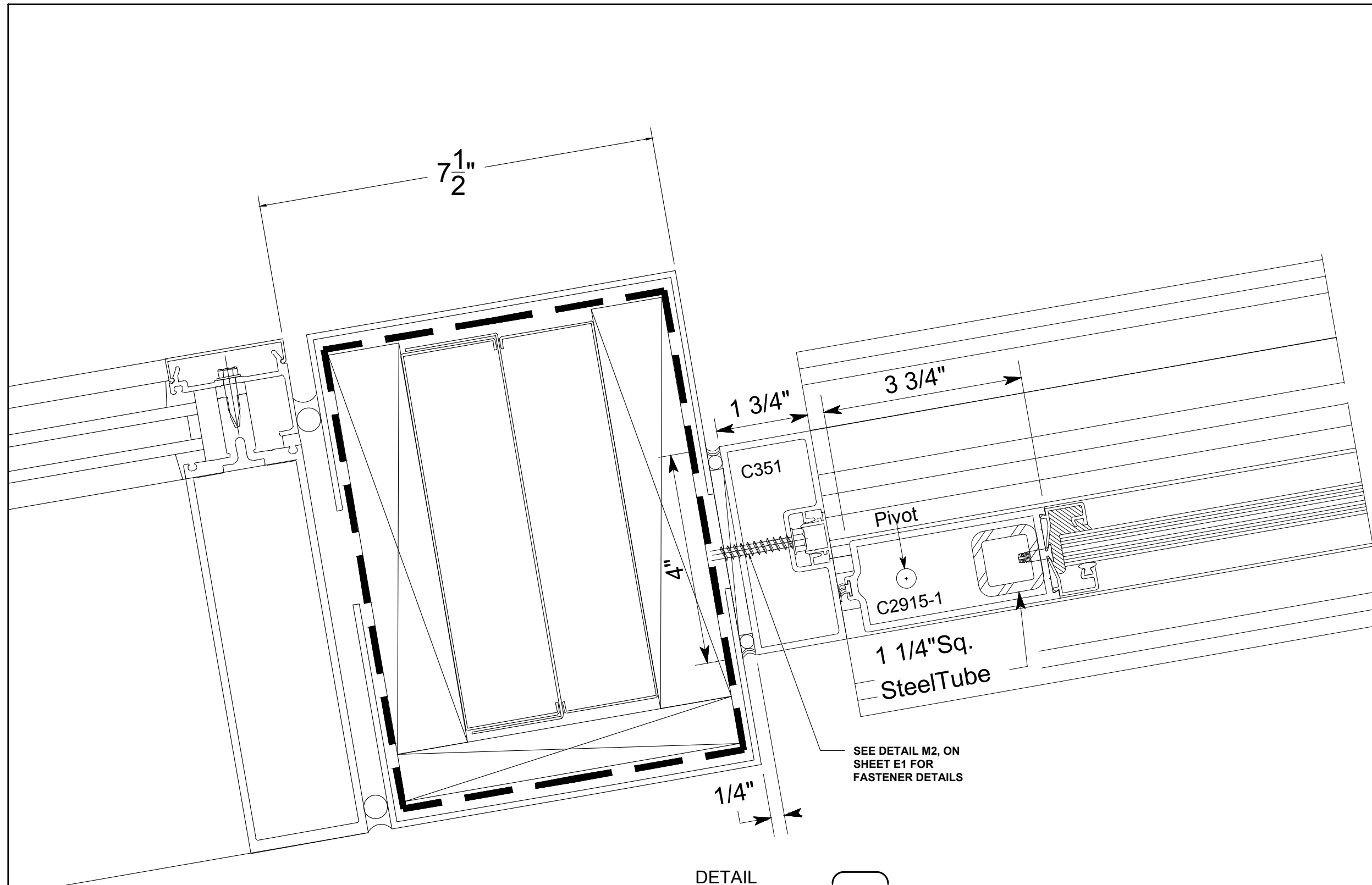


NO.	DATE	DESCRIPTION
1	04/29/18	First Submittal
2	05/01/18	CHANGES TO COMPLY WITH LARGE MISSILE REQUIREMENTS

**TEXAS GLASS & TINTING**  
 103 E. Mockingbird Ln, #B Victoria, TX 77901  
 (361) 572-0026 (800) 242-3007

PROJECT: Del Mar College Emerging Technologies  
**HORTON AUTOMATICS SLIDER**  
 ARCHITECT: GIGNAC | ARCHITECTS (361) 884-2861  
 GENERAL CONTRACTOR: WEAVER & JACOBS CONSTRUCTORS (361) 277-9300

PROJECT NO.	TG-1804-02
DRAWN BY	fp
DATE	05/01/18
SCALE	1/2" = 1'-0"
DRAWING	ELEVATIONS
SHEET	E1



**DETAIL**

SCALE: 1/2" = 1'-0"  
 ARCH. REF.: A1.1  
 3/A1.11  
 14/A5.6

**1**

**JAMB**

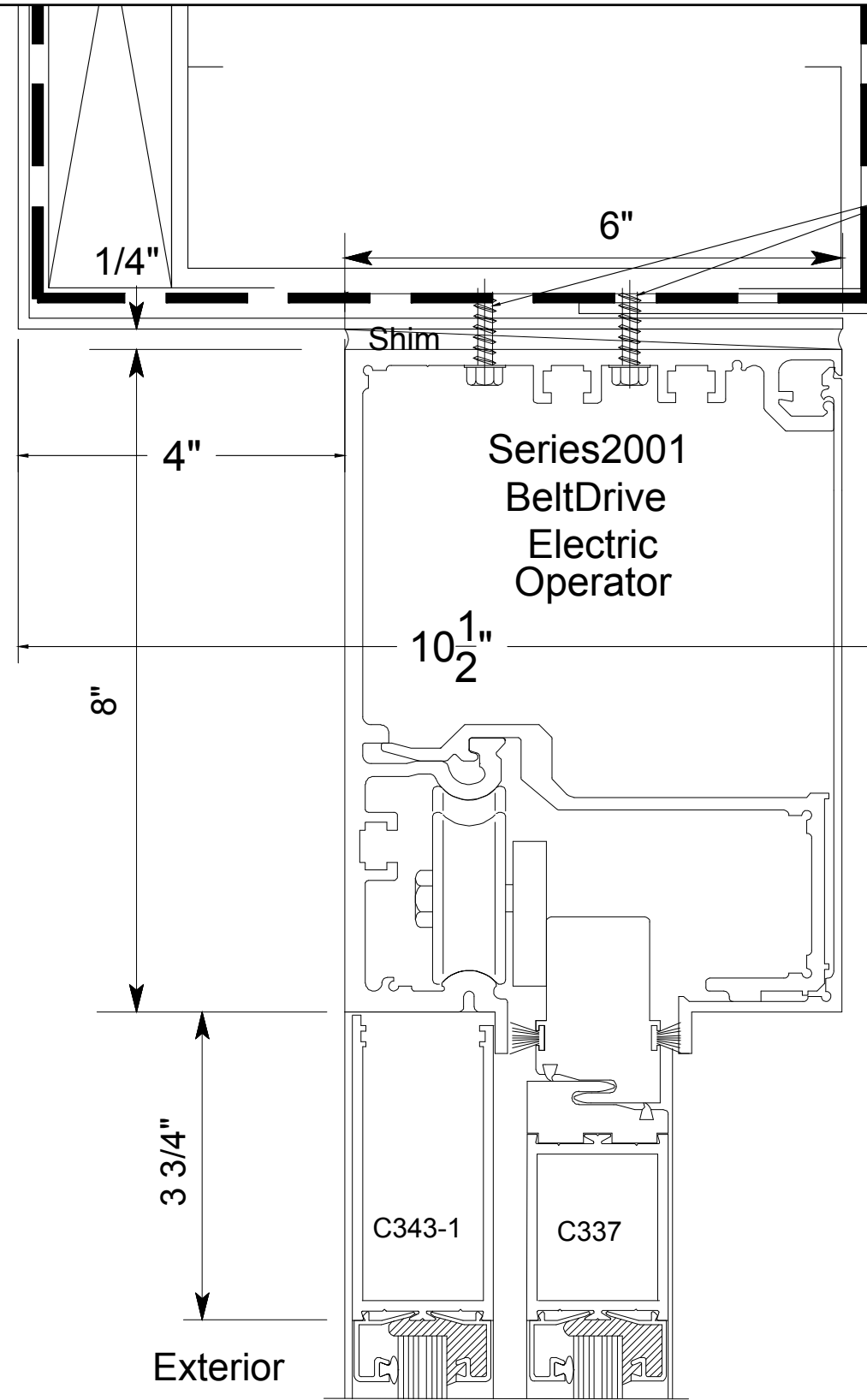
SYSTEM: HORTON AUTOMATICS, 2001 SLIDER

SUB	BY	DATE	DESCRIPTION
2	fp	05/01/18	CHANGES TO COMPLY WITH LARGE MISSILE REQUIREMENTS
1	fp	04/29/18	First Submittal

**TEXAS GLASS & TINTING**  
 103 E. Mockingbird Ln, #B Victoria, TX 77901  
 (361) 572-0026 (800) 242-3007

PROJECT: Del Mar College Emerging Technologies  
**HORTON AUTOMATICS SLIDER**  
 ARCHITECT: GIGNAC | ARCHITECTS  
 (361) 894-2861  
 GENERAL CONTRACTOR: WEAVER & JACOBS CONSTRUCTORS  
 (361) 277-9300

PROJECT NO.	TG-1804-02
DRAWN BY	fp
DATE	05/01/18
SCALE	6" = 1'-0"
DRAWING	DETAILS
SHEET	D1



SEE DETAIL M2,  
ON SHEET E1  
FOR FASTENER-  
TYPE DETAILS

**DETAIL**

SCALE: 1/2" = 1'-0"  
ARCH. REF.: A1.1  
3/A1.11  
15/A5.6

**2**

**HEADER**

SYSTEM: HORTON AUTOMATICS, 2001 SLIDER



SUB	BY	DATE	DESCRIPTION
1	fp	04/29/18	CHANGES TO COMPLY WITH LARGE MISSILE REQUIREMENTS
2	fp	05/01/18	First Submittal

**TEXAS GLASS & TINTING**  
103 E. Mockingbird Ln, #B Victoria, TX 77901  
(361) 572-0026 (800) 242-3007

PROJECT: Del Mar College Emerging Technologies  
**HORTON AUTOMATICS SLIDER**  
ARCHITECT: GIGNAC | ARCHITECTS  
(361) 894-2861  
GENERAL CONTRACTOR: WEAVER & JACOBS CONSTRUCTORS  
(361) 277-9300

PROJECT NO.	TG-1804-02
DRAWN BY	fp
DATE	05/01/18
SCALE	6" = 1'-0"
DRAWING	DETAILS
SHEET	D1